

User guide



Fall Detector™ 869MHz

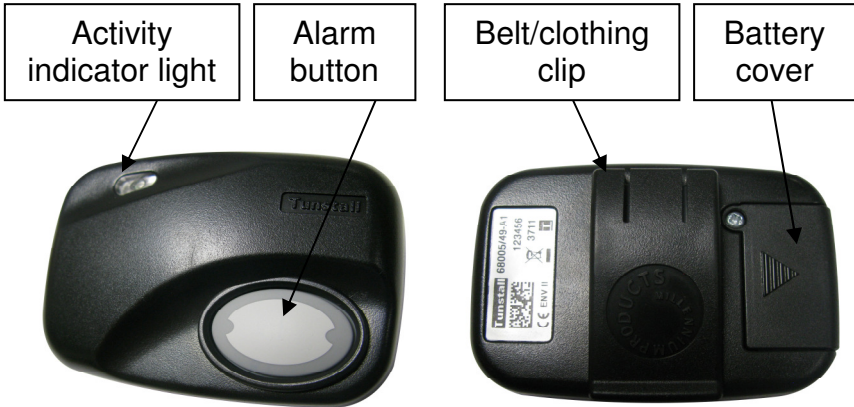
D6607016B

All the reassurance you need

Tunstall

What is the fall detector?

Your **fall detector**™ is a battery operated device that will automatically trigger an alarm call on your Lifeline home unit if it detects that you have fallen. You can also use it to manually raise an alarm call.



What is in the box?

The box contains this user guide, a fall detector, a fall detector stand and a belt/holster.



Before first use

1. The battery is supplied fitted within the battery compartment however a battery tab inside the compartment needs removing before use.
2. Remove the battery cover, take the battery tab out of the battery compartment and then replace the cover. See 'battery replacement' section for more information on how to remove the battery cover.
3. Once the battery tab is removed, the fall detector must be programmed into the Tunstall home unit by following these steps;
 - a. **Step 1** – Press and hold down the green cancel button on the home unit until it beeps (approx 5 seconds). The home unit announces 'Programming mode'.
 - b. **Step 2** – Press and hold down the green cancel button again until it beeps (approx 3 seconds). Release the cancel button. The home unit is now in 'Assign mode'.
 - c. **Step 3** – Activate the fall detector by pressing the alarm button, the home unit will announce Fall Detector to confirm acceptance and will then return to programming mode.
4. Whilst in programming mode, press the alarm button on the fall detector at various locations within the property to ensure full radio coverage within the home. The home unit will beep each time the alarm button is pressed to confirm radio coverage.
5. Press the green cancel key on the home unit to exit programming mode, then press the alarm button on the fall detector to ensure it raises an alarm call.

NOTE: The operation of some home units may differ please refer to the home unit's user guide for more information.

Wearing the *fall detector*

Clip the **fall detector** to your belt or clothing in the upright position as shown below. It needs to be in the upright position to reduce the possibility of false activation.



Important things to remember

- Remember, the **fall detector** will only detect you falling if you are wearing it.
- The **fall detector** must be worn at or above the waist, where it will detect the maximum number of falls.
- When removing the **fall detector**, handle carefully to avoid false calls. Place it on an even surface in the upright position and preferably in the stand provided.



- Due to the complex dynamics of falling, all falls may not be detected. In the event of a fall not being detected the manual button can still be used to call for help.
- It is not recommended that you wear the **fall detector** whilst in bed, as normal movement in bed may cause the fall detector to trigger.

How it works - Automatic fall detection

- Green light and two "beeps" indicate that the **fall detector** has been activated.
- The **fall detector** will then monitor for between 6 and 15 seconds to verify if there could have been a fall. The green light will flash while it does this.
 - If the detector has decided that there is a fall, then a red light and four "beeps" indicates that the **fall detector** is about to trigger an alarm call (because it has detected an impact and has not been upright for between 6 and 15 seconds).
 - If the detector has decided that it was activated by error then the green flashing light will stop after between 6 to 15 seconds and the unit will revert to normal operation again.

How it works - Manual operation

- Press the alarm button on the fall detector to raise a manual alarm call.
- The **fall detector** will "beep" and a red light indicates the **fall detector** is triggering an alarm call.
- If the red light flashes on and off, the **fall detector** is still triggering an alarm call, but is also indicating to you that the battery needs to be replaced.

Cancelling an automatic fall alarm

- If the **fall detector** does activate and beep when you know you have not fallen, you can prevent it raising an alarm by ensuring that it is returned to an upright position.

Care of the fall detector

- Avoid getting the **fall detector** wet (if it does then dry it quickly and make a manual test call to confirm it is working correctly).
- If required, the **fall detector** may be cleaned periodically with a damp cloth and mild detergent.
- It is recommended that you test the **fall detector** once a month either by:
 - Pressing the alarm button.
 - Simulating a fall condition by following this process. Stand the fall detector on a hard flat surface i.e. table top. Knock the fall detector over into a horizontal position. After 5 seconds the **fall detector** should beep and the green light will start to flash. Leave the fall detector and the light will change to red to indicate an alarm has been sent.

Spares and Accessories

The following replacement parts are available. Please contact your supplier for more details.

Battery	S1004040
Belt clip	D6802004
Battery cover	D6802005
Belt and holster	D6609001

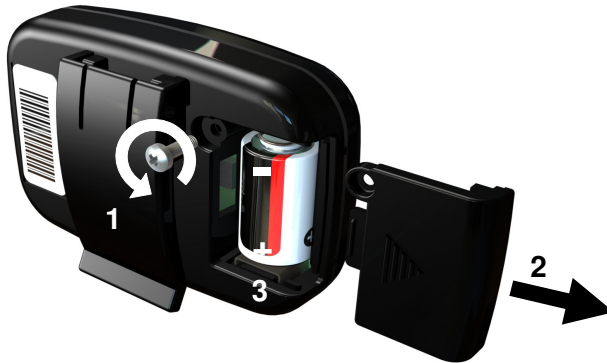
Battery Replacement

The battery will need replacing approximately every 12 months. When the battery is low, the Fall Detector will automatically send a signal to your monitoring service to inform them that the battery needs changing. As an additional low battery indicator, the red light will flash rather than staying on continuously when a manual alarm call is made.

- The unit automatically tests the battery and is able to generate an alarm call when a low battery is detected.
- If it is necessary for you to change the battery, the fall detector uses a 3.6 volt ER14250 (1/2 AA) lithium battery.
- After approximately 12 months the battery should be replaced. In many cases your provider will change the battery for you. This guide includes a handy table to help you remember when the battery should be changed.

To replace the battery

- 1) To access the battery, remove the battery cover screw
- 2) Remove the battery cover by sliding it in the direction of the arrow.



- 3) Remove the battery and replace it with the new battery (ER14250, 1/2 AA), remember to observe the correct orientation.
- 4) Replace the sliding cover and the screw. Test the fall detector by making a manual call. Inform the operator that you are making a battery test call.
- 5) If the device fails to make a test call then check the orientation of the battery. If this is correct then contact your supplier.

NOTE: Dispose of used batteries in accordance with the latest legislation. Do not dispose of in household waste.

Technical information

Weight:	75g
Dimensions:	75 x 53 x 28mm (WxHxD)
Battery:	3.6 volt ER14250 (½ AA) lithium
Battery Life:	Up to 12 months
Radio frequency:	869.2125MHz, compliant with the European Social Alarm frequency band

Environmental

Temperature:	Operating temperature (to perform to full specification) = 0°C to 45°C, storage = -10°C to 50°C
Humidity:	Operating relative humidity (non condensing to perform to full specification) = 0 to 80%, storage relative humidity (non condensing) = 0 to 93%

Standards

EMC:	EN50130-4: 1995
Safety:	EN60950:2006
Radio:	ETSI EN300 220-2: 2010
CE:	Compliant
Design and Manufacture:	ISO9001:2008

Declaration of Conformity

We, Tunstall declare that this social alarm equipment is in compliance with the essential requirements and other relevant provisions of the R&TTE Directive 1999/5/EC.

Battery Replacement Guide

Battery Inserted Date			Battery Replacement Date		
<i>Day</i>	<i>Month</i>	<i>Year</i>	<i>Day</i>	<i>Month</i>	<i>Year</i>

Remember to change the battery every 12 months.

Tunstall

www.tunstall.co.uk



Our policy of continual development means that product specification and appearance may change without notice.

© 2011 Tunstall Group Ltd.

® TUNSTALL and LIFELINE are registered trade marks.

Tunstall Group Limited, Whitley Lodge, Whitley Bridge, Yorkshire DN14 0HR
Tel: 01977 661234 Fax: 01977 662450 Email: enquiries@tunstall.co.uk